



JAL Y' MAR

RESIDENCE

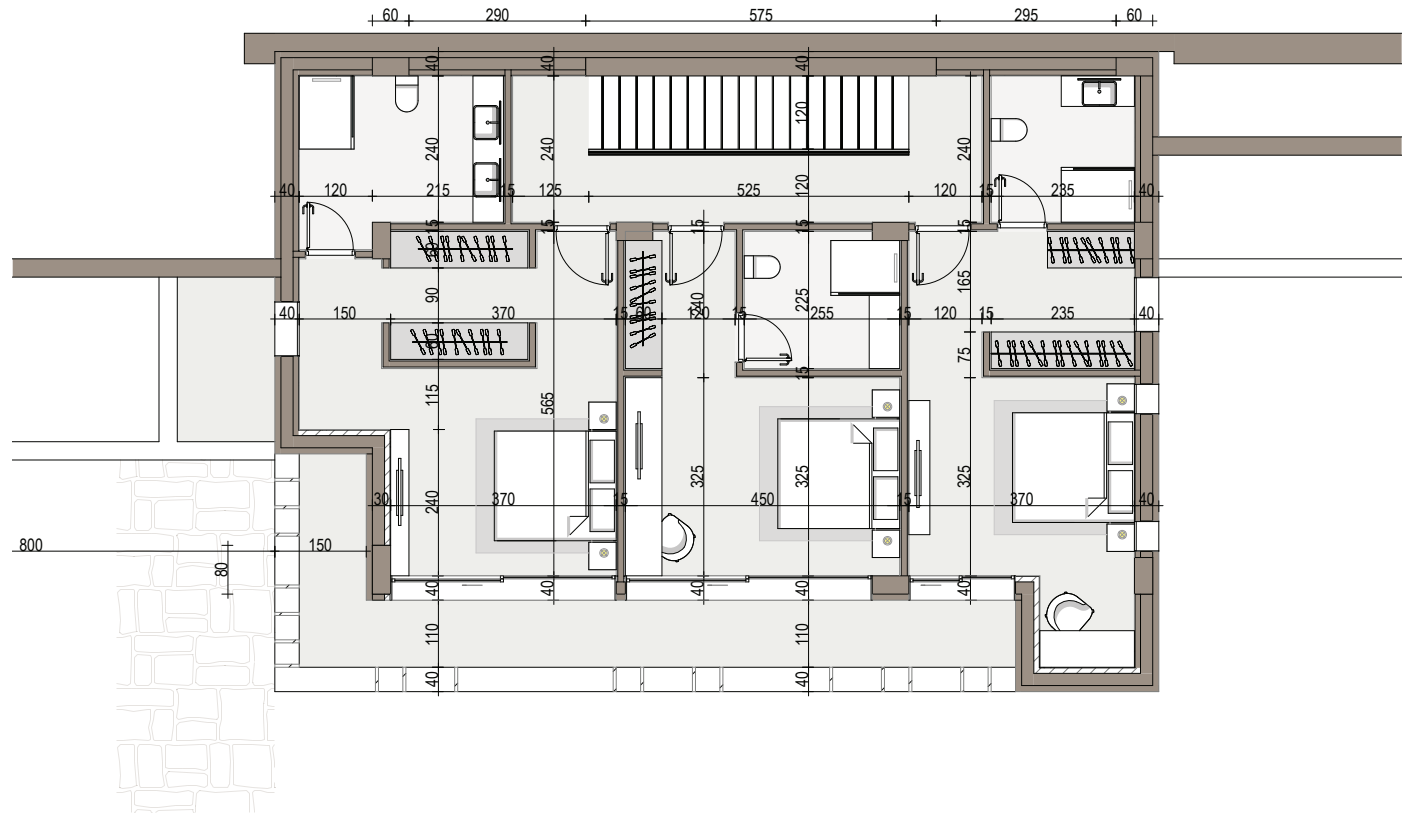
VILA

F2

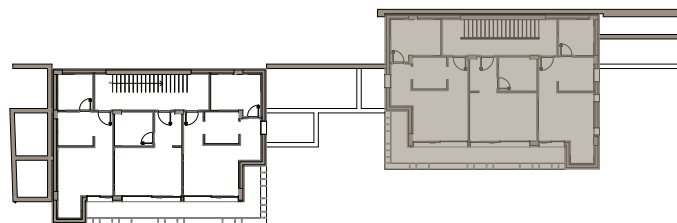
Kate 2+2
 Tipologjia 3 dh. gjumi
 Dhoma per miq 2
 Parking 2

Sip. Banimi 334,1 m²
 Sip. Nën tok 73,5 m²
 Sip. Përbashket 96,7 m²
 Sip Totale 504,3 m²
 Sip. Oborri 578,42 m²
 Pishinë PO

Kati 1



Pozicioni i apartamentit



Pamje Skematike 3D

